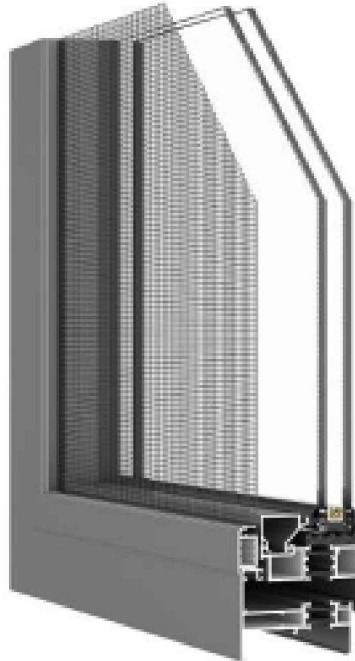


2100 AWNING WINDOW

2100.000.00.0

THERMALLY BROKEN OPERABLE WINDOW



DETAILS AND SPECIFICATION

- INTERIOR GLAZING
- EPDM SEALED GASKETS
- CAN BE INTEGRATED WITH DIFFERENT ENERFREES PRODUCTS PROFILES SUCH AS 1850 WINDOW SECTION , 5250 CW, 5200 CW, AND 4300 FLUSH GLAZING
- GLASS CAN BE DOUBLE OR TRIPLE GLAZING (WITH SIZE LIMITATION: see Size Limit Table)
- HIGH PERFORMANCE THERMAL BARRIER TO WITHSTAND EXTREME WEATHER TEMPERATURE
- ANODIZED AND POWDER COATING FINISH OPTION
- SLIM PROFILE FOR WIDER VISIBILITY



ENERFREES™
Window & Wall Systems

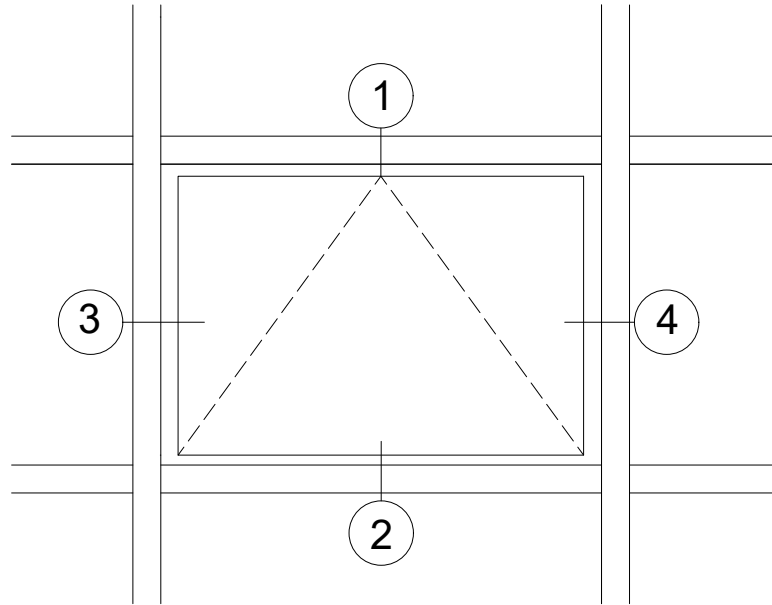
Manufacturer of High-performance Aluminum Systems
Address: 6 Denison St., Markham, Ontario, L3R 1B6
Tel: 1-800-678-1118 905-604-5118
www.enerfrees.com info@enerfrees.com

V2022.10

2100 AWNING WINDOW

2100.185.10.0
1850 FRAMING INTEGRATION

1850 WINDOW SECTION FRAMING INTEGRATION



2100 can be integrated with 1850 (Double and Triple Glazing) flat, 1" (25.4mm) or 2" (50.8mm) extension framing profiles. 2100 profile series is manufactured to fit in with 1850 framing for an easy install.



ENERFREES™
Window & Wall Systems

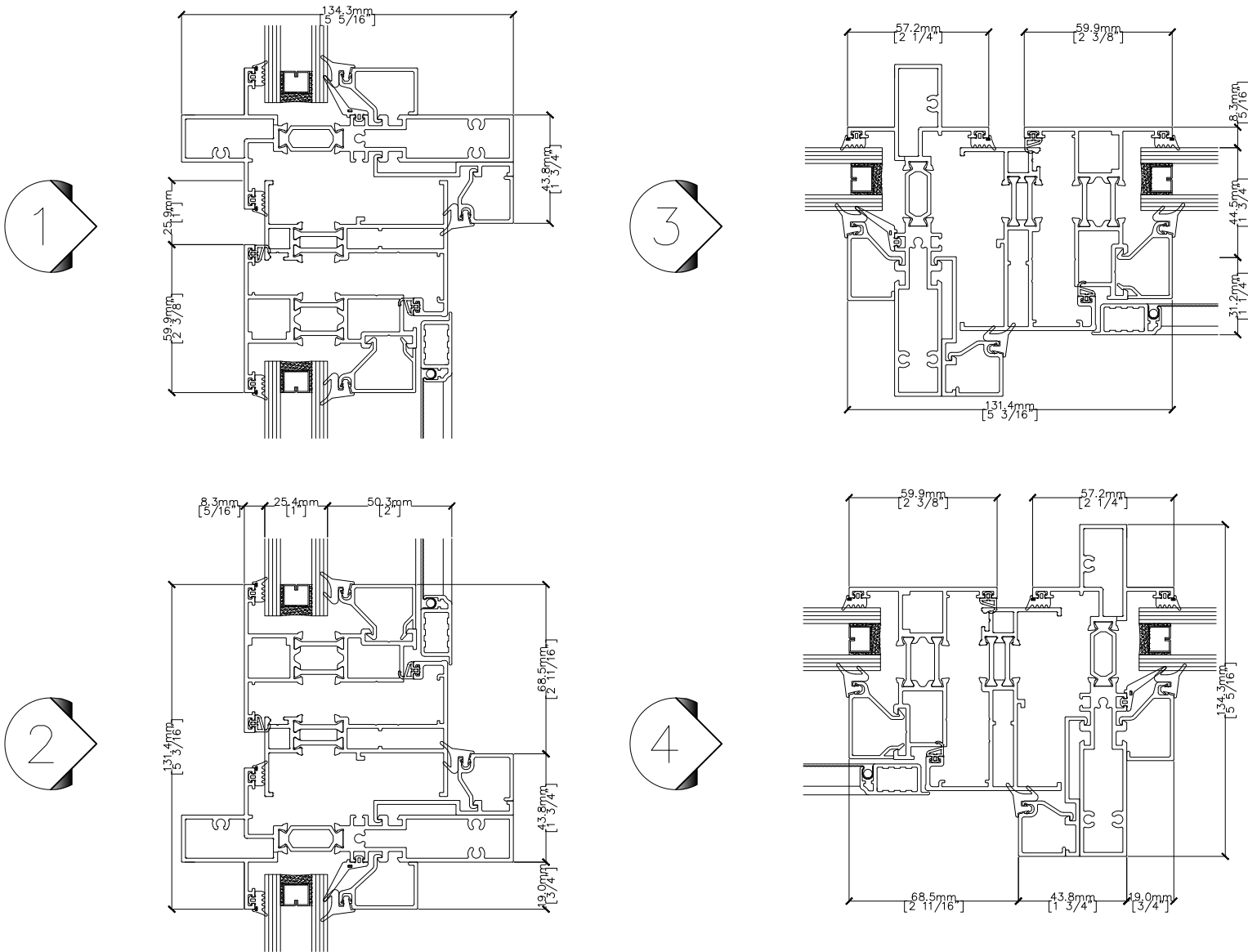
Manufacturer of High-performance Aluminum Systems
Address: 6 Denison St., Markham, Ontario, L3R 1B6
Tel: 1-800-678-1118 905-604-5118
www.enerfrees.com info@enerfrees.com

V2022.10

2100 AWNING WINDOW

2100.185.10.1
1850 FRAMING INTEGRATION

1850 WINDOW SECTION FRAMING INTEGRATION—DOUBLE GLAZED



ENERFREES™
Window & Wall Systems

Manufacturer of High-performance Aluminum Systems
Address: 6 Denison St., Markham, Ontario, L3R 1B6
Tel: 1-800-678-1118
www.enerfrees.com

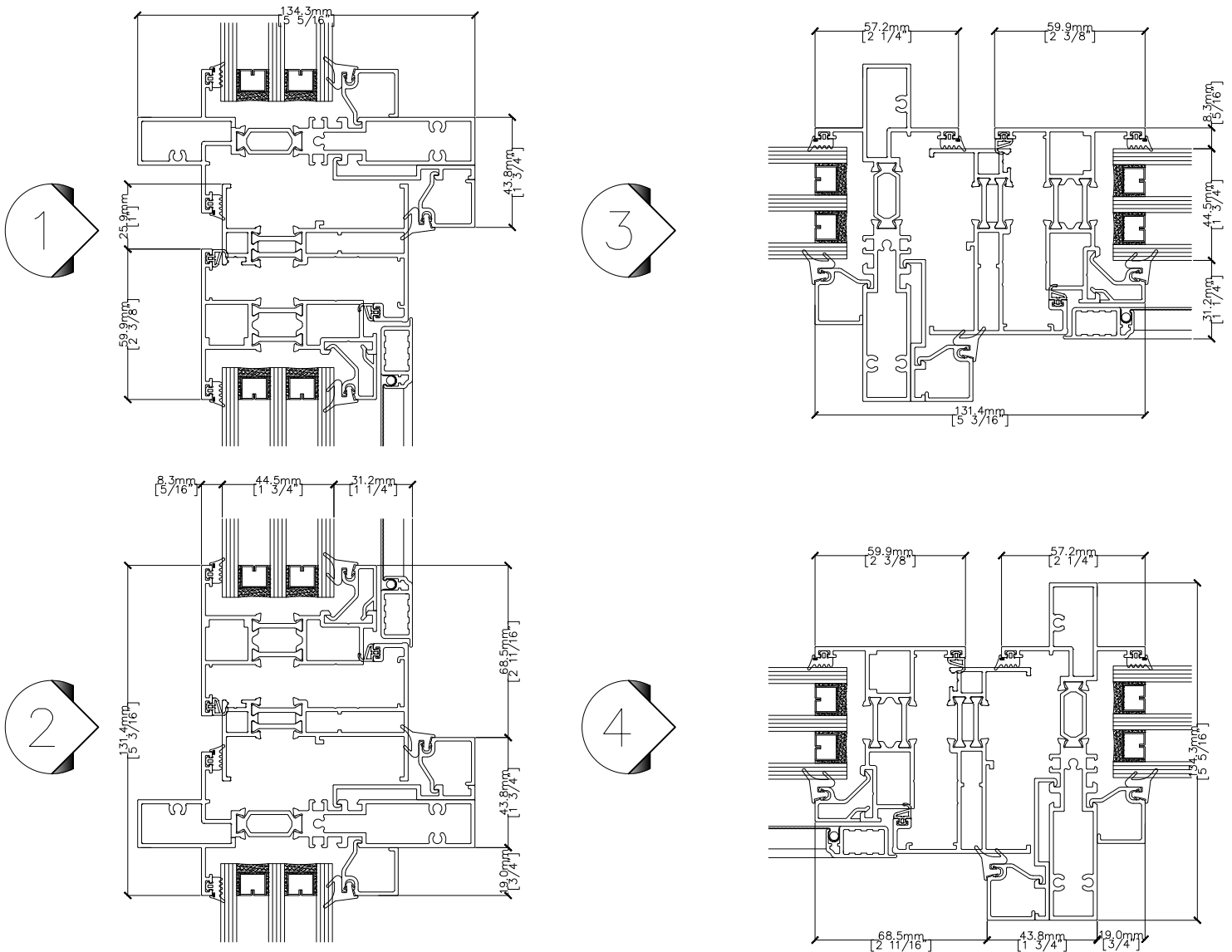
905-604-5118
info@enerfrees.com

V2022.10

2100 AWNING WINDOW

2100.185.10.2
1850 FRAMING INTEGRATION

1850 WINDOW SECTION FRAMING INTEGRATION—TRIPLE GLAZED



ENERFREES™
Window & Wall Systems

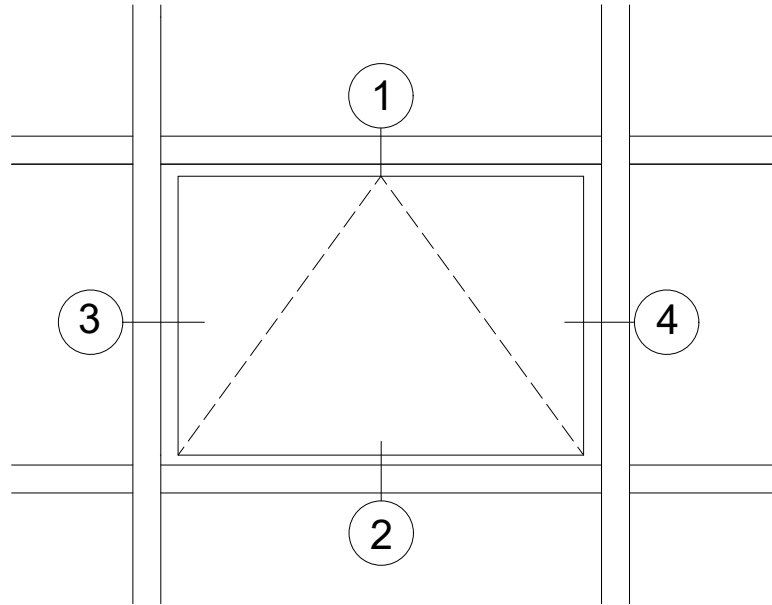
Manufacturer of High-performance Aluminum Systems
Address: 6 Denison St., Markham, Ontario, L3R 1B6
Tel: 1-800-678-1118 905-604-5118
www.enerfrees.com info@enerfrees.com

V2022.10

2100 AWNING WINDOW

2100.520.20.0
5200 CURTAIN WALL INTEGRATION

5200 CURTAIN WALL FRAMING INTEGRATION



2100 can be integrated with 5200 (Double and Triple Glazing) curtain wall framing profiles. 2100 profile series is manufactured to fit in with 5200 framing for an easy install.



ENERFREES™
Window & Wall Systems

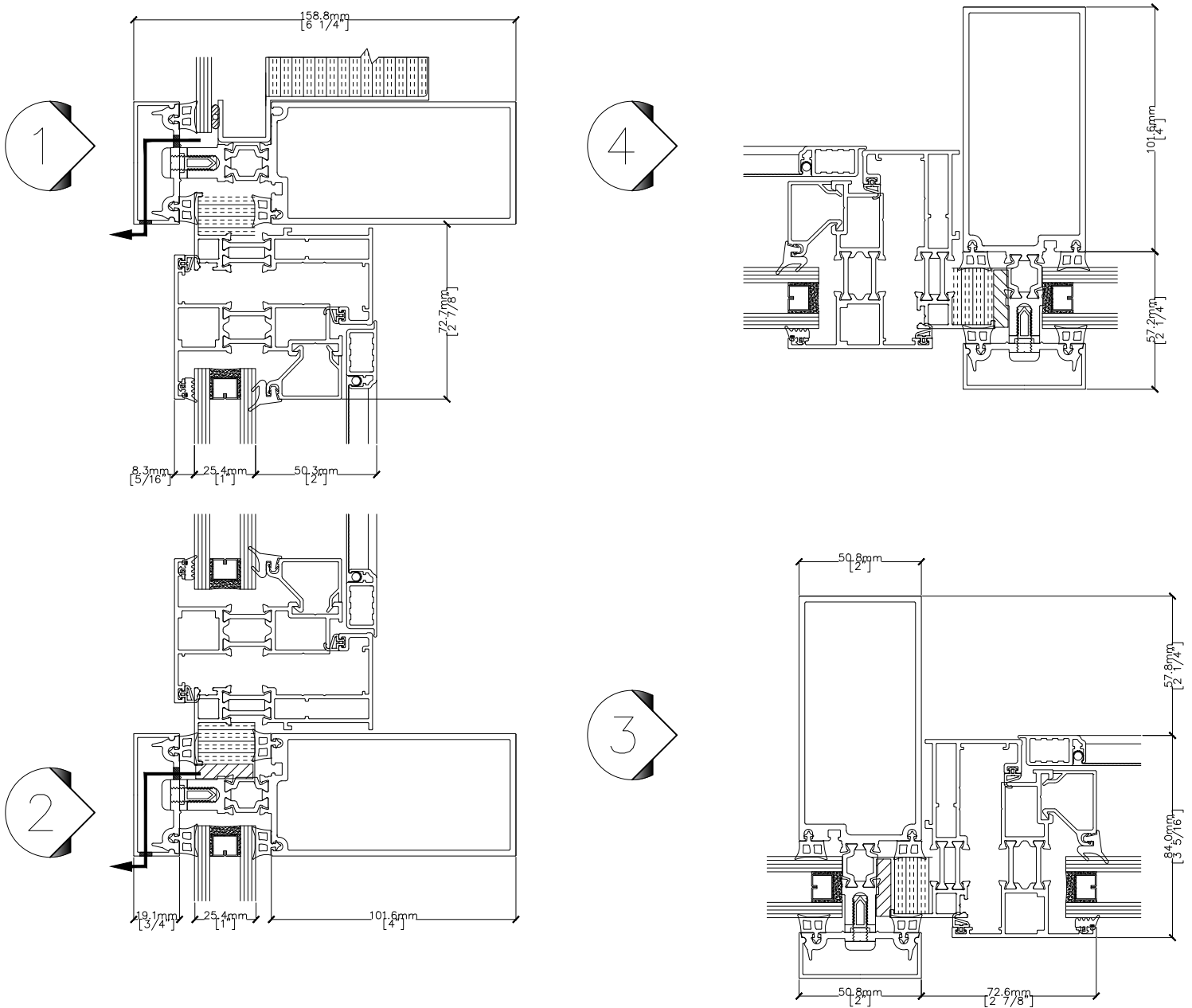
Manufacturer of High-performance Aluminum Systems
Address: 6 Denison St., Markham, Ontario, L3R 1B6
Tel: 1-800-678-1118 905-604-5118
www.enerfrees.com info@enerfrees.com

V2022.10

2100 AWNING WINDOW

2100.520.20.1
5200 CURTAIN WALL INTEGRATION

5200 CURTAIN WALL FRAMING INTEGRATION—DOUBLE GLAZED



ENERFREES™
Window & Wall Systems

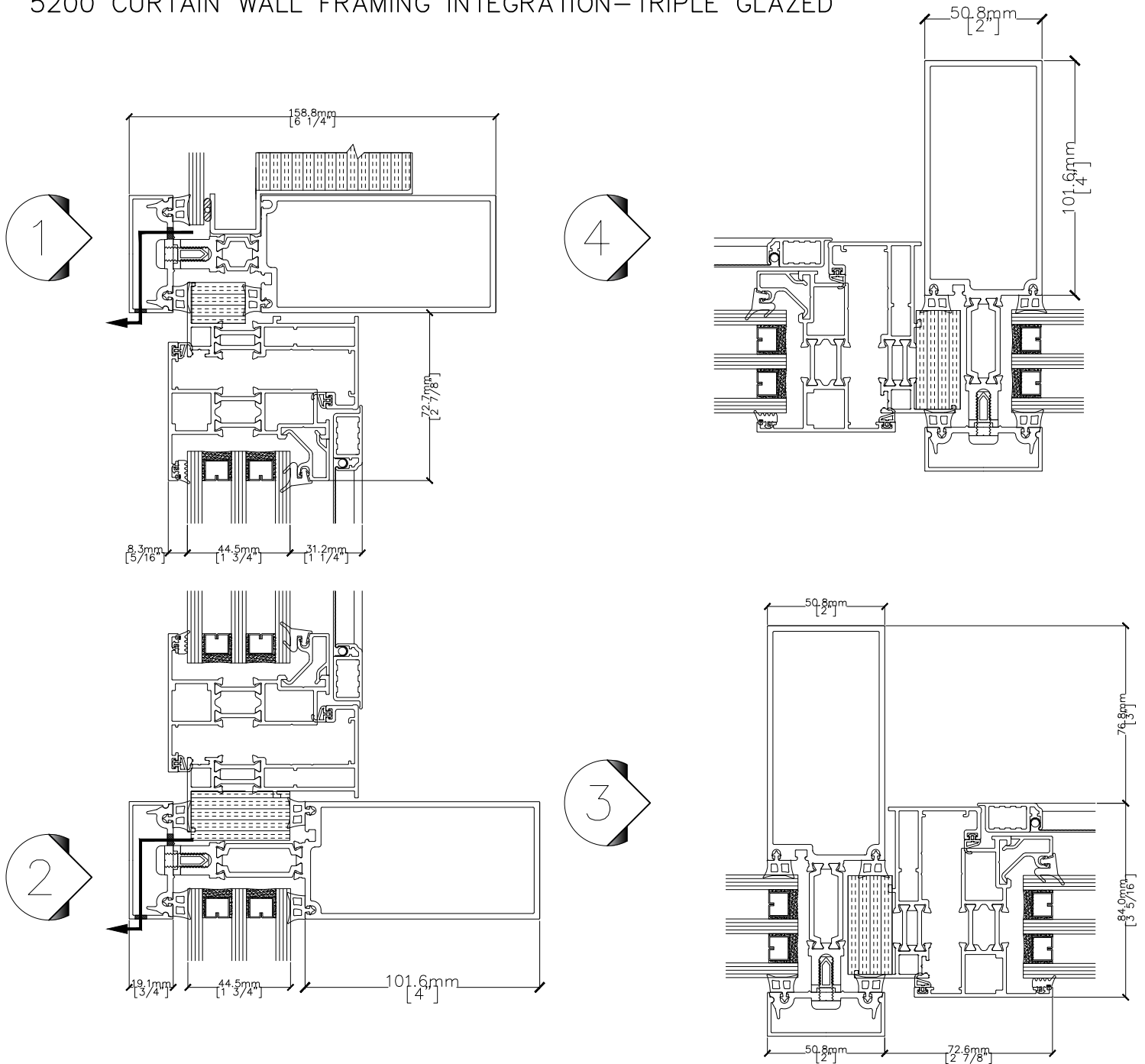
Manufacturer of High-performance Aluminum Systems
Address: 6 Denison St., Markham, Ontario, L3R 1B6
Tel: 1-800-678-1118 905-604-5118
www.enerfrees.com info@enerfrees.com

V2022.10

2100 AWNING WINDOW

2100.520.20.2
5200 CURTAIN WALL INTEGRATION

5200 CURTAIN WALL FRAMING INTEGRATION—TRIPLE GLAZED



ENERFREES™
Window & Wall Systems

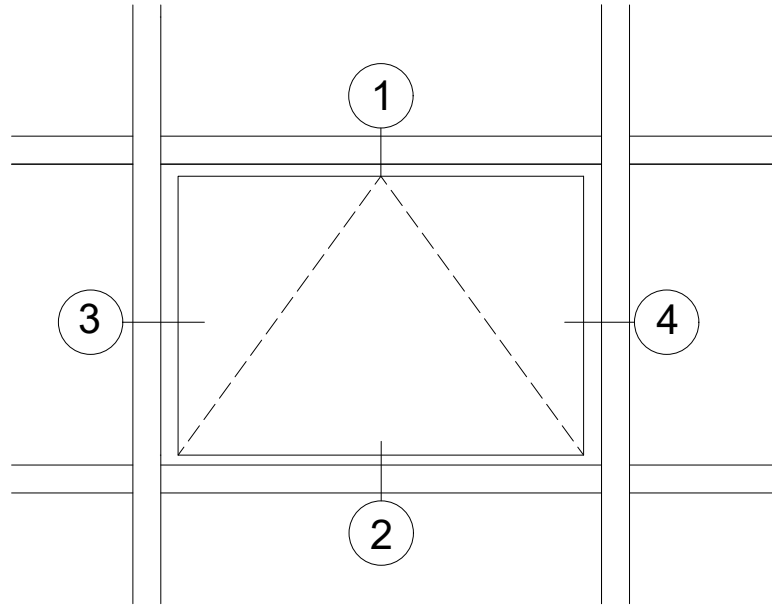
Manufacturer of High-performance Aluminum Systems
Address: 6 Denison St., Markham, Ontario, L3R 1B6
Tel: 1-800-678-1118 905-604-5118
www.enerfrees.com info@enerfrees.com

V2022.10

2100 AWNING WINDOW

2100.525.30.0
5250 CURTAIN WALL INTEGRATION

5250 CURTAIN WALL FRAMING INTEGRATION



2100 can be integrated with 5250 (Double and Triple Glazing) curtain wall framing profiles. 2100 profile series is manufactured to fit in with 5250 framing for an easy install.



ENERFREES™
Window & Wall Systems

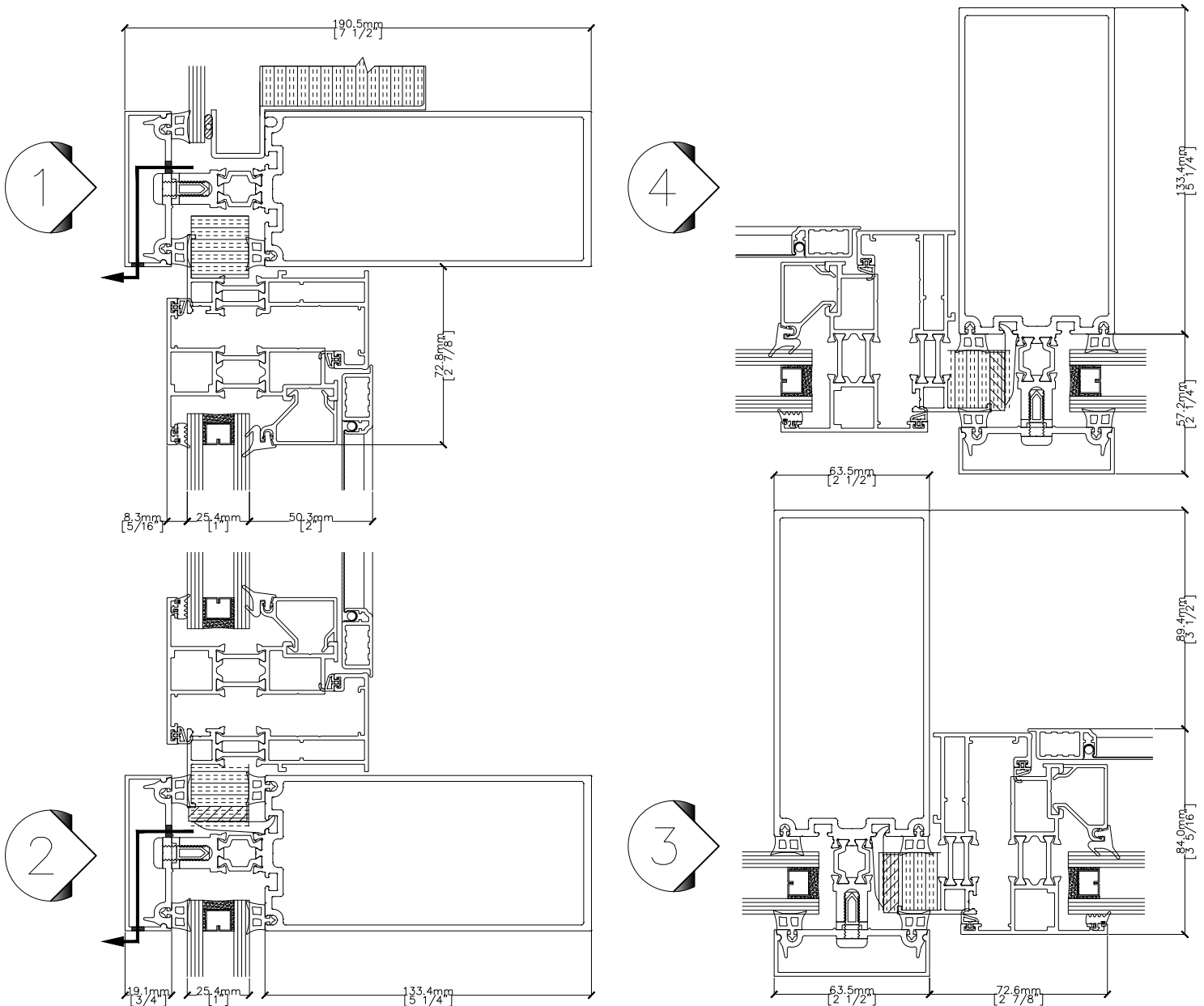
Manufacturer of High-performance Aluminum Systems
Address: 6 Denison St., Markham, Ontario, L3R 1B6
Tel: 1-800-678-1118 905-604-5118
www.enerfrees.com info@enerfrees.com

V2022.10

2100 AWNING WINDOW

2100.525.30.1
5250 CURTAIN WALL INTEGRATION

5250 CURTAIN WALL FRAMING INTEGRATION—DOUBLE GLAZED



ENERFREES™
Window & Wall Systems

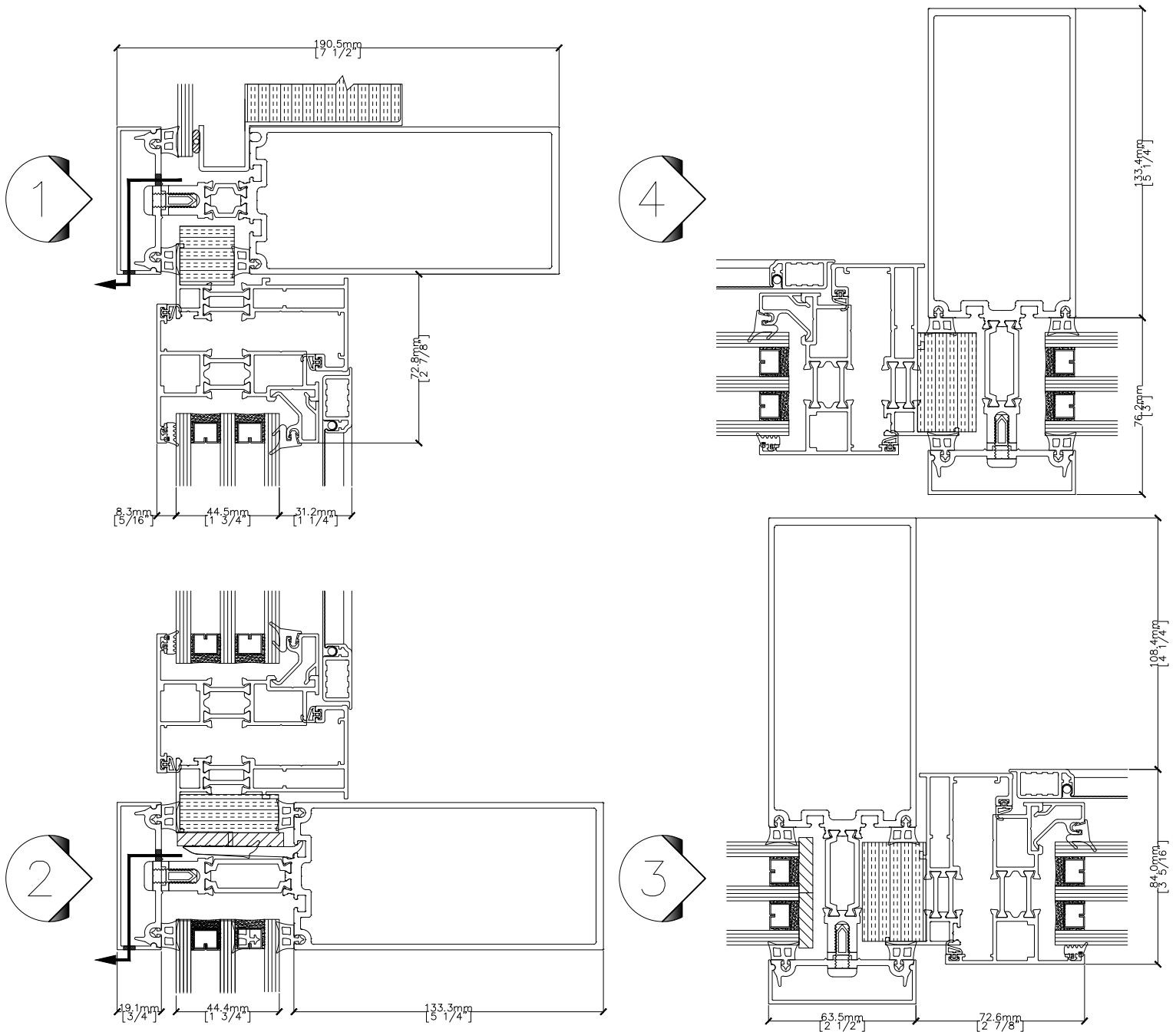
Manufacturer of High-performance Aluminum Systems
Address: 6 Denison St., Markham, Ontario, L3R 1B6
Tel: 1-800-678-1118 905-604-5118
www.enerfrees.com info@enerfrees.com

V2022.10

2100 AWNING WINDOW

2100.525.30.2
5250 CURTAIN WALL INTEGRATION

5250 CURTAIN WALL FRAMING INTEGRATION—TRIPLE GLAZED



ENERFREES™
Window & Wall Systems

Manufacturer of High-performance Aluminum Systems
Address: 6 Denison St., Markham, Ontario, L3R 1B6
Tel: 1-800-678-1118 905-604-5118
www.enerfrees.com info@enerfrees.com

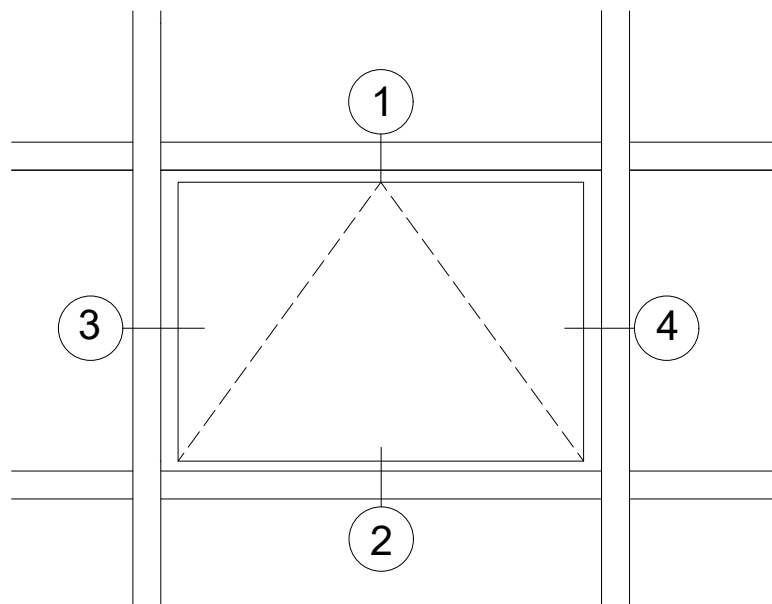
V2022.10

2100 AWNING WINDOW

2100.430.40.0

4300 STOREFRONT INTEGRATION

4300 FRAMING INTEGRATION



2100 can be integrated with 4300 (Double and Triple Glazing) framing profiles. 2100 profile series is manufactured to fit in with 4300 framing for an easy install.



ENERFREES™
Window & Wall Systems

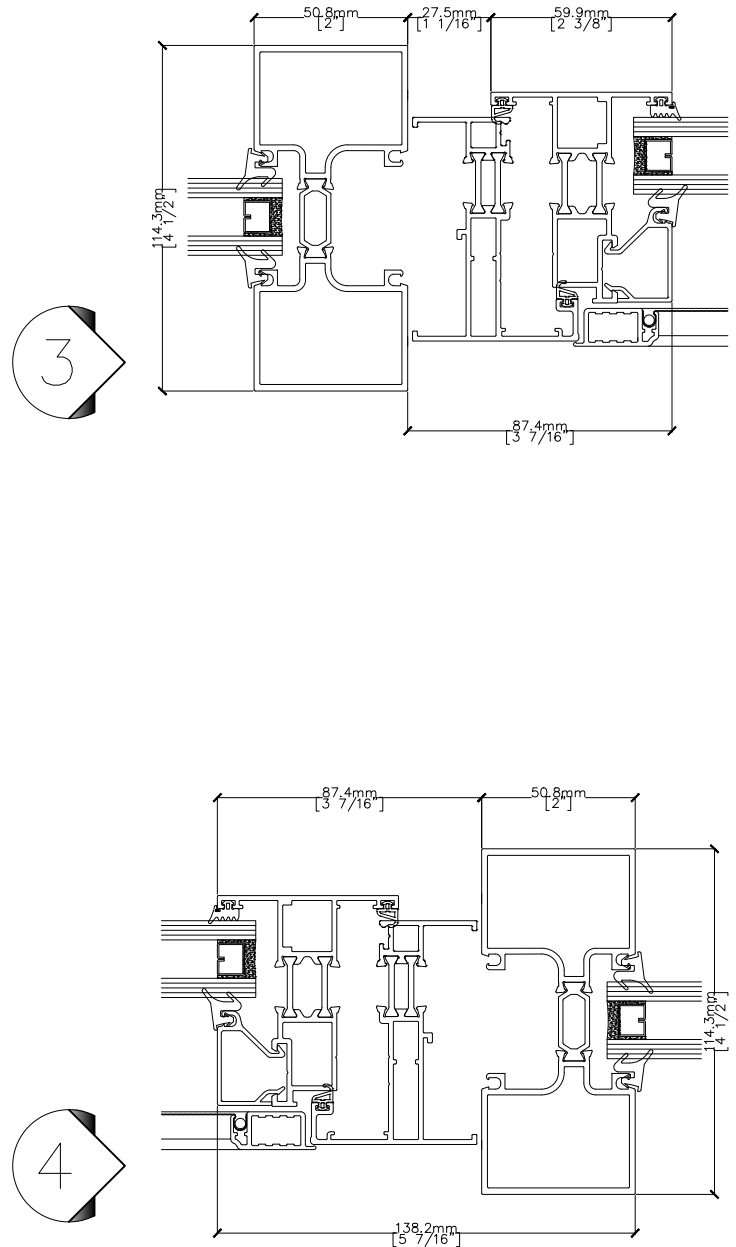
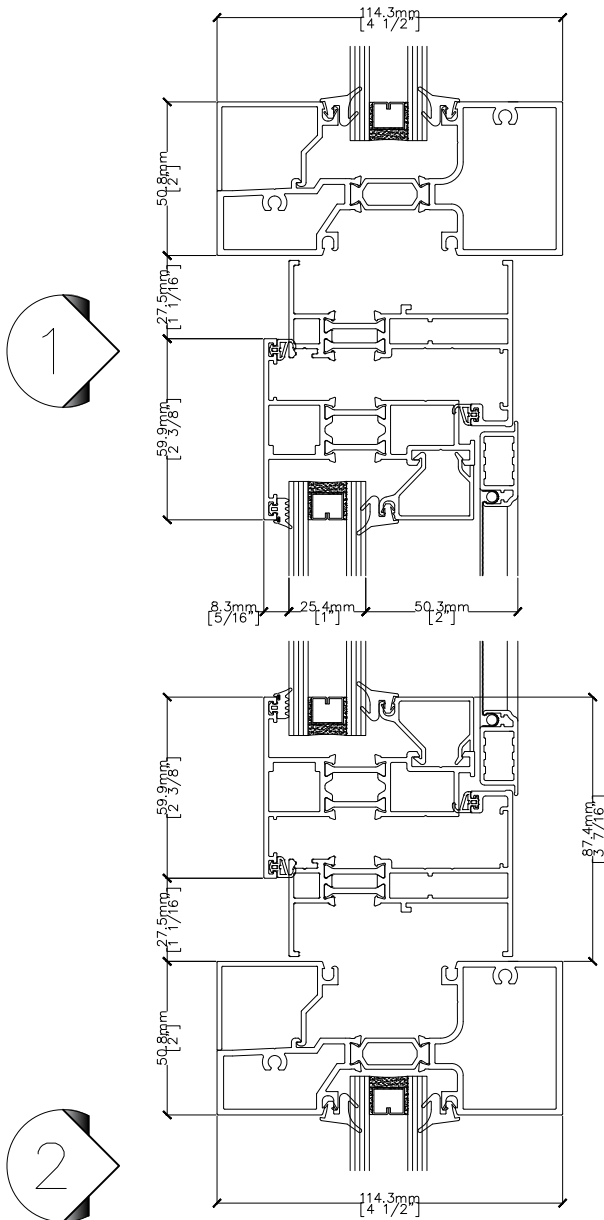
Manufacturer of High-performance Aluminum Systems
Address: 6 Denison St., Markham, Ontario, L3R 1B6
Tel: 1-800-678-1118 905-604-5118
www.enerfrees.com info@enerfrees.com

V2022.10

2100 AWNING WINDOW

2100.430.40.1
4300 STOREFRONT INTEGRATION

4300 FRAMING INTEGRATION—DOUBLE GLAZED



ENERFREES™
Window & Wall Systems

Manufacturer of High-performance Aluminum Systems
Address: 6 Denison St., Markham, Ontario, L3R 1B6
Tel: 1-800-678-1118 905-604-5118
www.enerfrees.com info@enerfrees.com

V2022.10

2100 AWNING WINDOW

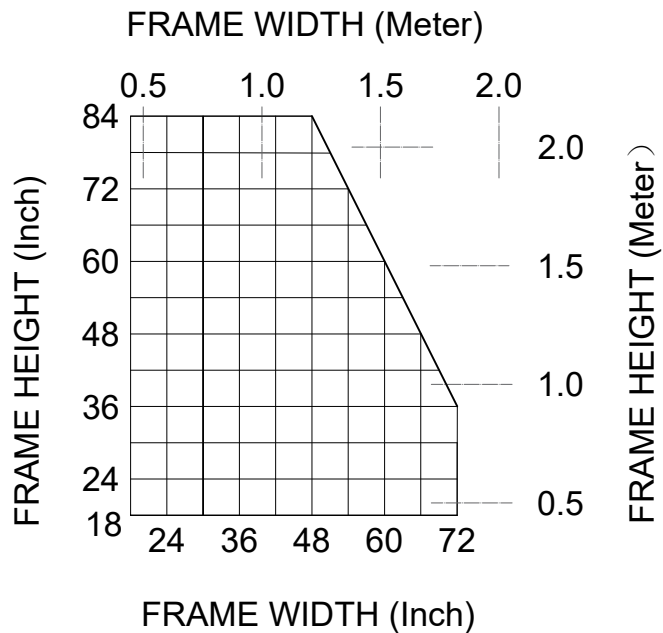
2100.4.1
SIZE LIMIT

2100 AWNING FRAME SIZE LIMIT

(FRAME SIZE ARE LIMITED DUE TO GLASS SPECIFIC WEIGHT)

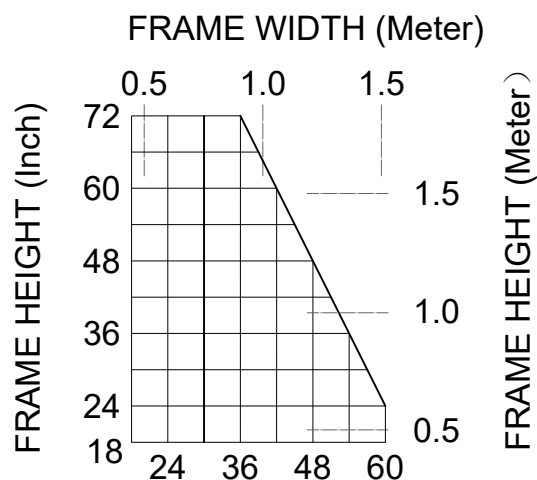
SIZE LIMITS WITH DOUBLE GLAZING

GLASS SIZES INCLUDES THE FF:
6MM + 13MM + 6MM



SIZE LIMITS WITH TRIPLE GLAZING

GLASS SIZES INCLUDES THE FF:
6MM + 13MM + 6MM + 13MM + 6MM



ENERFREES™
Window & Wall Systems

Manufacturer of High-performance Aluminum Systems
Address: 6 Denison St., Markham, Ontario, L3R 1B6
Tel: 1-800-678-1118 905-604-5118
www.enerfrees.com info@enerfrees.com

V2022.10

2100 AWNING WINDOW

2100.5.1
U-FACTOR TABLE-DOUBLE GLAZED

2100 AWNING GLASS U-FACTOR-DOUBLE GLAZED

1. The overall product U-factors are determined in accordance with NFRC 100-2010.
2. The Center-of-Glazing U-factors are determined by the insulated glass unit (IGU) and provided for by glass manufacturer/supplier.
3. The simulated specimen size is based on NFRC 100-2010 Table 4-3 Product Type Projecting (Awning-Single), which is 1500mm (59") width by 600mm (23 5/8").

METRIC UNITS

| Center-of-Glazing U-factor (W/m ² -K) | Non-metal Spacer | Aluminum Spacer |
|---|---|---|
| | Product U-factor (W/m ² -K) | Product U-factor (W/m ² -K) |
| 1.00 | 2.24 | 2.45 |
| 1.10 | 2.30 | 2.50 |
| 1.20 | 2.36 | 2.56 |
| 1.30 | 2.41 | 2.61 |
| 1.40 | 2.47 | 2.67 |
| 1.50 | 2.53 | 2.72 |
| 1.60 | 2.59 | 2.78 |
| 1.70 | 2.65 | 2.84 |
| 1.80 | 2.71 | 2.89 |
| 1.90 | 2.78 | 2.95 |
| 2.00 | 2.85 | 3.00 |
| 2.10 | 2.91 | 3.06 |
| 2.20 | 2.97 | 3.12 |
| 2.30 | 3.02 | 3.17 |
| 2.40 | 3.07 | 3.23 |
| 2.50 | 3.13 | 3.29 |

IMPERIAL UNITS

| Center-of-Glazing U-factor (Btu/h-ft ² -F) | Non-metal Spacer | Aluminum Spacer |
|--|--|--|
| | Product U-factor (Btu/h-ft ² -F) | Product U-factor (Btu/h-ft ² -F) |
| 0.18 | 0.40 | 0.43 |
| 0.20 | 0.41 | 0.44 |
| 0.22 | 0.42 | 0.46 |
| 0.24 | 0.43 | 0.47 |
| 0.26 | 0.44 | 0.48 |
| 0.28 | 0.46 | 0.49 |
| 0.30 | 0.47 | 0.50 |
| 0.32 | 0.48 | 0.51 |
| 0.34 | 0.49 | 0.52 |
| 0.36 | 0.51 | 0.53 |
| 0.38 | 0.52 | 0.54 |
| 0.40 | 0.53 | 0.56 |
| 0.42 | 0.54 | 0.57 |
| 0.44 | 0.55 | 0.58 |



ENERFREES™
Window & Wall Systems

Manufacturer of High-performance Aluminum Systems
Address: 6 Denison St., Markham, Ontario, L3R 1B6
Tel: 1-800-678-1118
www.enerfrees.com

905-604-5118
info@enerfrees.com

V2022.10

2100 AWNING WINDOW

2100.5.2
U-FACTOR TABLE-TRIPLE GLAZED

2100 AWNING GLASS U-FACTOR-TRIPLE GLAZED

1. The overall product U-factors are determined in accordance with NFRC 100-2010.
2. The Center-of-Glazing U-factors are determined by the insulated glass unit (IGU) and provided for by glass manufacturer/supplier.
3. The simulated specimen size is based on NFRC 100-2010 Table 4-3 Product Type Projecting (Awning-Single), which is 1500mm (59") width by 600mm (23 5/8").

METRIC UNITS

| Center-of-Glazing U-factor (W/m ² -K) | Non-metal Spacer | Aluminum Spacer |
|---|---|---|
| | Product U-factor (W/m ² -K) | Product U-factor (W/m ² -K) |
| 0.50 | 1.79 | 1.99 |
| 0.60 | 1.85 | 2.05 |
| 0.70 | 1.90 | 2.10 |
| 0.80 | 1.96 | 2.16 |
| 0.90 | 2.02 | 2.22 |
| 1.00 | 2.09 | 2.28 |
| 1.10 | 2.25 | 2.33 |
| 1.20 | 2.49 | 2.39 |
| 1.30 | 2.37 | 2.45 |
| 1.40 | 2.20 | 2.50 |
| 1.50 | 2.04 | 2.56 |
| 1.60 | 2.06 | 2.62 |
| 1.70 | 2.12 | 2.67 |

IMPERIAL UNITS

| Center-of-Glazing U-factor (Btu/h-ft ² -F) | Non-metal Spacer | Aluminum Spacer |
|--|--|--|
| | Product U-factor (Btu/h-ft ² -F) | Product U-factor (Btu/h-ft ² -F) |
| 0.10 | 0.32 | 0.36 |
| 0.12 | 0.33 | 0.37 |
| 0.14 | 0.35 | 0.38 |
| 0.16 | 0.36 | 0.39 |
| 0.18 | 0.37 | 0.40 |
| 0.20 | 0.41 | 0.41 |
| 0.22 | 0.43 | 0.43 |
| 0.24 | 0.40 | 0.44 |
| 0.26 | 0.37 | 0.45 |
| 0.28 | 0.36 | 0.46 |
| 0.30 | 0.37 | 0.47 |



ENERFREES™
Window & Wall Systems

Manufacturer of High-performance Aluminum Systems
Address: 6 Denison St., Markham, Ontario, L3R 1B6
Tel: 1-800-678-1118
www.enerfrees.com

905-604-5118
info@enerfrees.com

V2022.10